

BC MINING PROPERTIES

MINING PROPERTIES AVAILABLE FOR SALE, OPTION OR JOINT VENTURE

[Home](#)

[About Us](#)

[Conversions](#)

[Links](#)

[Questions](#)

[Contact Us](#)

[Equipment](#)

GOLD HILL MINE

Forty Nine Creek, Nelson BC

Mines Act Permit MX-5-845

5-year Drilling & Trenching Exploration Permit in place (effective July 21st, 2020)

[GOLD HILL. MINFILE 082FSW092](#)

The property is located 2.4 km past the May & Jennie Mineral Leases on a 25 ha cell (Mineral Claim [333280](#)) just off the Copper Mountain Forestry Road (upslope from 49 Creek).

*The Gold Hill mine discovered south of the May & Jennie was a very promising enterprise until the life of the owner (Mr. McDonald) was taken in a cave-in around 1925. ([*ARIS Report 29553](#)). Underground drifting was extended in 1927 and the property remained inactive until 1974. The underground workings were rehabilitated and sampled in 1983 and the last work recorded work was by Formosa Resources in 1991.

Production records indicate the Gold Hill produced 303 ounces Au, 252 ounces Ag and 3435 lbs. Cu from 126 tons mined for an average grade of more than 2.40 opt Au.

FYI: MTO has the Minfile pin on their mapping misplaced 650m to the NW. There is however, no question as to the location of this mine.

Gold Hill ore is comprised of massive quartz, malachite, chrysocolla, copper, silver with free-gold, bornite and silver running in grades to multiple ounces per ton Gold.

Almost anything XRF'd (on mineralization) runs more than 1 ounce per ton over the face of the XRF window. I have spent roughly 6 afternoons prospecting the property and have discovered the vein extends on each side of the main adit which appears to have been dug straight into the vein. Amazingly.... 20m each side of the main adit just off the face of the road lies high-grade ore and in many cases c/w visible free gold as seen in the pictures.

Shown below are pictures of samples taken from the property including pictures of "show ore" that was given to Chamber of Mines in Nelson back in the day. These three specimens are some of the most beautiful ore I have ever seen. The back specimen is a chunk of quartz with ridiculous amounts of free-gold with the front two pieces being solid bornite, all of which all carry multi-ounce grades of GOLD.

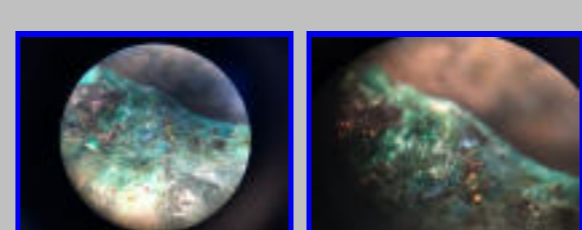
The lower pics are of XRFs from samples taken and the last row are of the vein extensions on each side of portal into the historic mine from where the samples have been taken.

Much of the Gold Hill gold also can be found in laminations found between layers of fractured quartz. Many of which carry gold into the tens of ounces per ton.

The property is owned jointly (50/50).

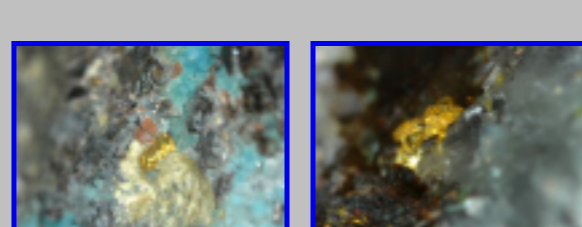


Gold, Bornite and Silver in quartz from the Gold Hill

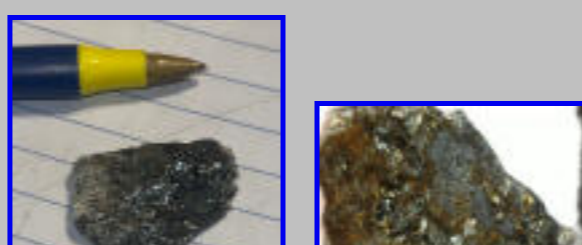


Sample from the Gold Hill

(Click to Expand and click a 2nd time for an even larger view)



Visible Free Gold is frequent in samples taken from the Gold Hill property



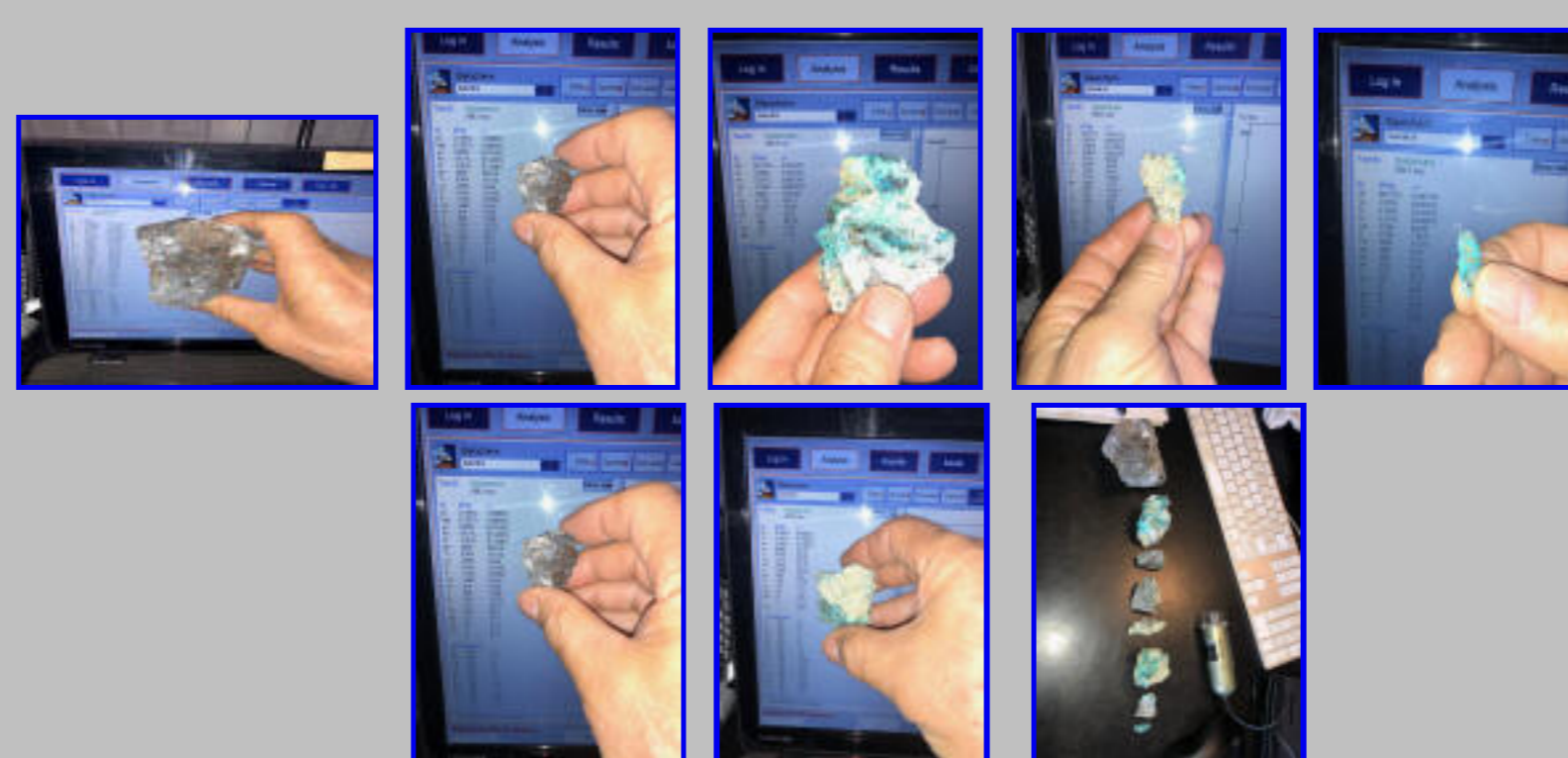
Gold in Laminations between layers of quartz



Samples taken off the Gold Hill Property



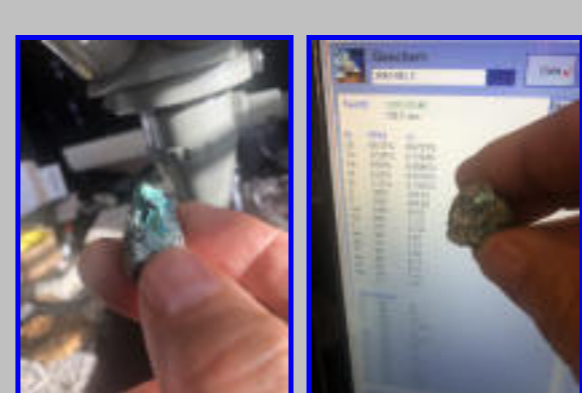
Chamber of Mines (Nelson) Gold Hill Ore



Left Vein Extension - Right Vein Extension

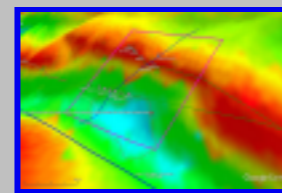
(note the dark layers / laminations many of which carry high grade gold)

(click to open then click again to get a magnified view)

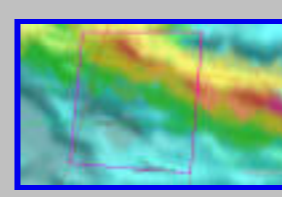


Another sample along with a corresponding XRF over free gold & bornite

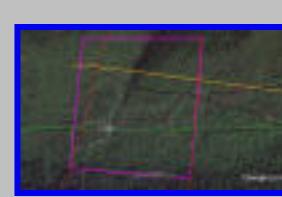
[Gold Hill Prospecting Video](#) - Warning: course language



VTEM Geophysical over the Gold Hill Mine area



VTEM Z Off geophysical over Gold Hill Mine Area



Gold Hill forest observations from Google Earth



Gold Hill Claim Map Gold Hill Mineral Claim Map

Ministry of Mines Annual Report 1903

An important strike was made on this property during the year, when the ledge was cut at a depth of 300 feet. The two claims in this group (*Gold Hill and Silver Crown*) are situated on the south-east fork of 49-creek and, owing to their inaccessibility, development was carried on with the greatest difficulty. Surface showings on the ground were promising, and the vein was uncovered for 300 feet and found to vary in size from 18 inches to 3 feet, the ore from it assaying from \$15 upwards, in gold and silver, with a small percentage of copper. It was thought best to open the property up by a cross-cut tunnel and work upon this was commenced four years ago. When the tunnel had been advanced 600 feet a large dyke was encountered, which proved to be 25 feet wide, and when this was passed through the ledge was reached. At this point the ledge is 3 feet wide, two-thirds of it being solid quartz and the remainder decomposed rock. Assays made from the latter have a value of \$37 in gold to the ton. Very high assays were had from

H 158

REPORT OF THE MINISTER OF MINES.

1903

the quartz but nothing in the way of a sampling of the ledge was attempted. The strike was made late in the year. As it was impossible to get supplies to the property the difficulties under which the work was carried on may be appreciated, it being necessary to trundle all material out of the tunnel in a wheel-barrow. A trail to the property has been started by the Government, and when it is completed in the spring an ore car and steel will be taken in and work on the property resumed.

Ministry of Mines Annual Report 1904

This property is situated about two miles above the *May and Jennie* Gold Hill and *Group*, and is now sufficiently developed to warrant a company with the necessary capital taking it over. The work consists of a 600-foot cross-cut, which intercepts the ledge at a depth of 300 feet. At the point where the ledge was cut in the tunnel it was drifted upon for 50 feet, and a shaft was also sunk 35 feet. The ledge, so far as it has been developed, shows a uniform width of 3 feet and carries quartz in much of which the gold shows free. From tests made of the ledge it has been shown that the entire 3 feet carries approximately \$25 in free gold values to the ton and about 1% in copper, and from 2 to 3 ounces silver. The owners made two test shipments to the Nelson smelter of five tons each. The first represented the entire ledge matter and yielded smelter returns of \$25 to the ton in gold. The second shipment was made up of sorted ore and gave returns of \$80 to the ton. The ground in this property is said to be very easy to work, and arrangements are being made under which it is expected the property will be operated during the approaching summer.

INQUIRIES

-Warning-

All properties on this site are offered for mining purposes only. Title to a mineral or placer claim does not include surface rights or the right to use the property for residential or recreational purposes.

BC MINING PROPERTIES IS OPERATED AS A DIVISION OF 802213 AB LTD

[DISCLAIMER](#)

Copyright